

Kathmandu University
E-Learning Forum [https://elf.ku.edu.np]
Moodle LMS Used by School of Science and School of Engineering
Performance Report [02.07.2021]

Last Report Date: 02.04.2021 (3 Months)

Prepared by: ISMS

SYSTEM DETAILS

S. No.	Particulars	Details
1	Active Since	2011
2	Moodle Version	3.10
3	Operating System	CentOS Linux 7.4
4	Server Processor	Intel Xeon E3-1220v2 @3.1GHz
5	Server Memory/Storage	32 GB / 1 TB (79% Used)

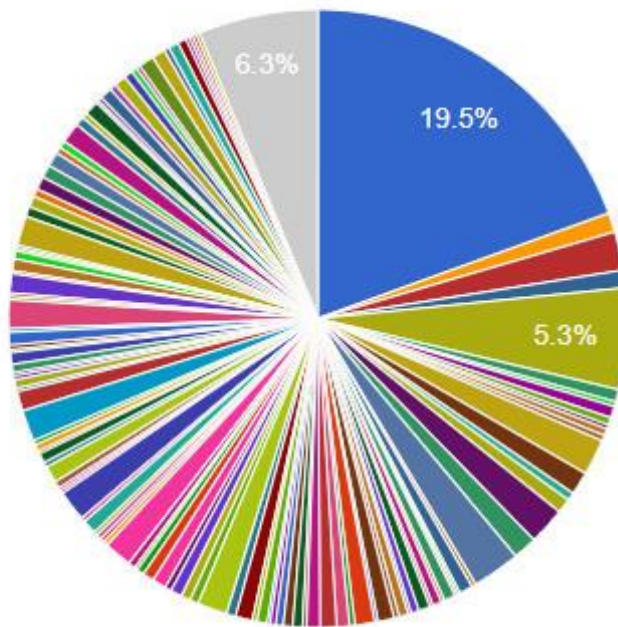
SYSTEM STATISTICS

S. No.	Particulars	Amount
1	Total Number of Users	6350
2	Total Admin Users	6
3	Total Course Admin Users	200
4	Total Course Student Users	5103
5	Total New Users (Since Last Report)	405
5	Total Active Users (Last 1 Year)	2742
6	Total Active Users (Last 3 Months)	1973
7	Total Active Course Admin Users (Last 1 Year)	95
8	Total Active Course Admin Users (Last 3 Months)	56
9	Total Courses (<i>includes archived/obsolete as well</i>)	870
10	Total Active Courses	205
11	Total End Sem Question Sets	1558
12	Total Thesis and Project Reports	114

MOST ACTIVE COURSES (TILL NOW)

- Based on activities inside a course from the **beginning of time**
- ELF represents activities outside all courses

Courses activity (Events by course)

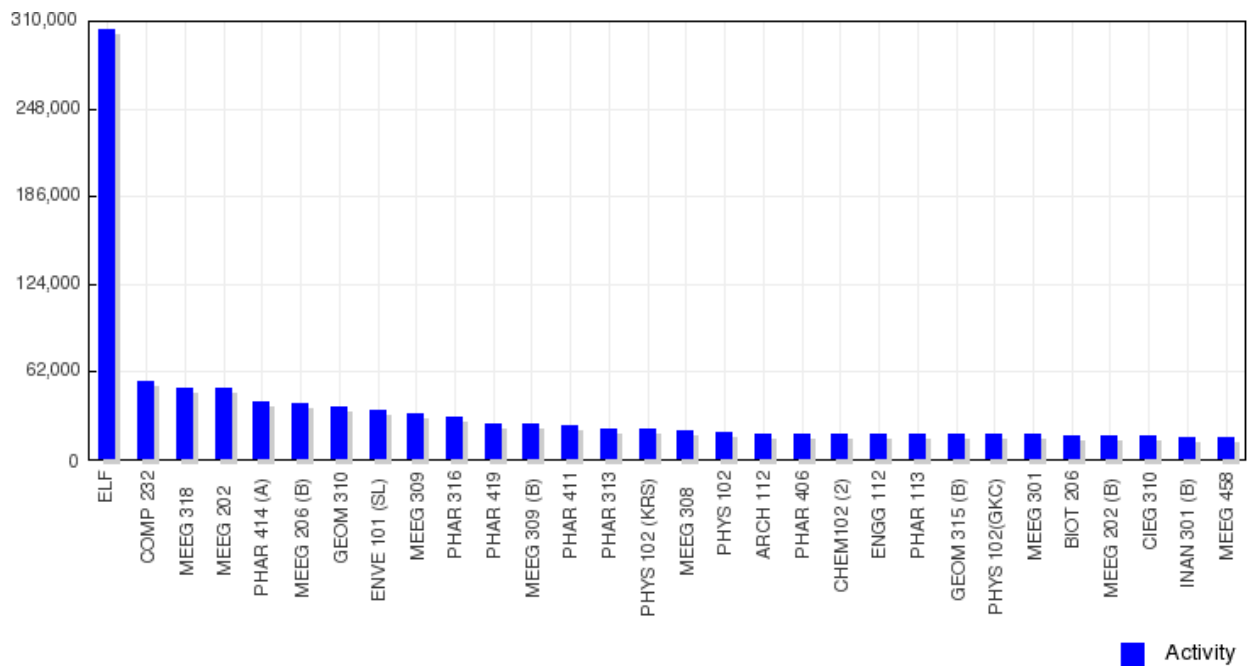


Top 12

- ELF
- COMP 472 (C)
- COMP 341
- COMP 314
- COMP 232
- COMP 116
- EPEG 318
- EEEG 215
- EEEG 213
- MATH 103
- PHYS102
- ENVE101

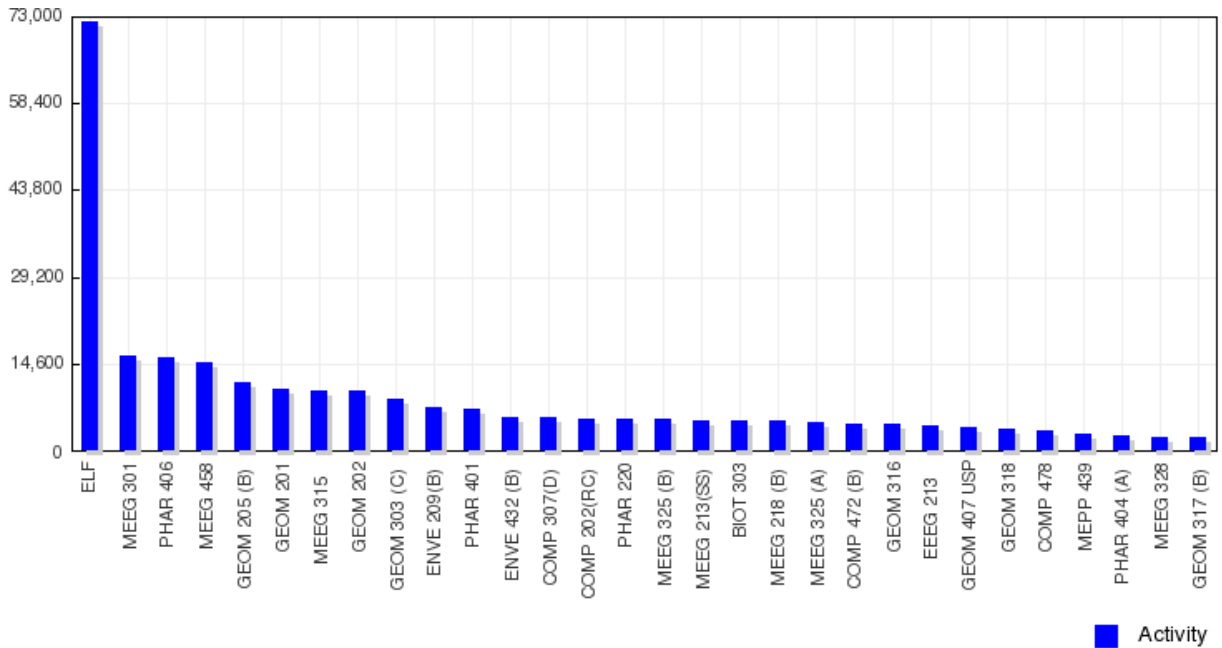
MOST ACTIVE COURSES (LAST 1 YEAR)

- Top 30 Courses
- Based on activities inside a course from last 1 year
- ELF represents activities outside all courses



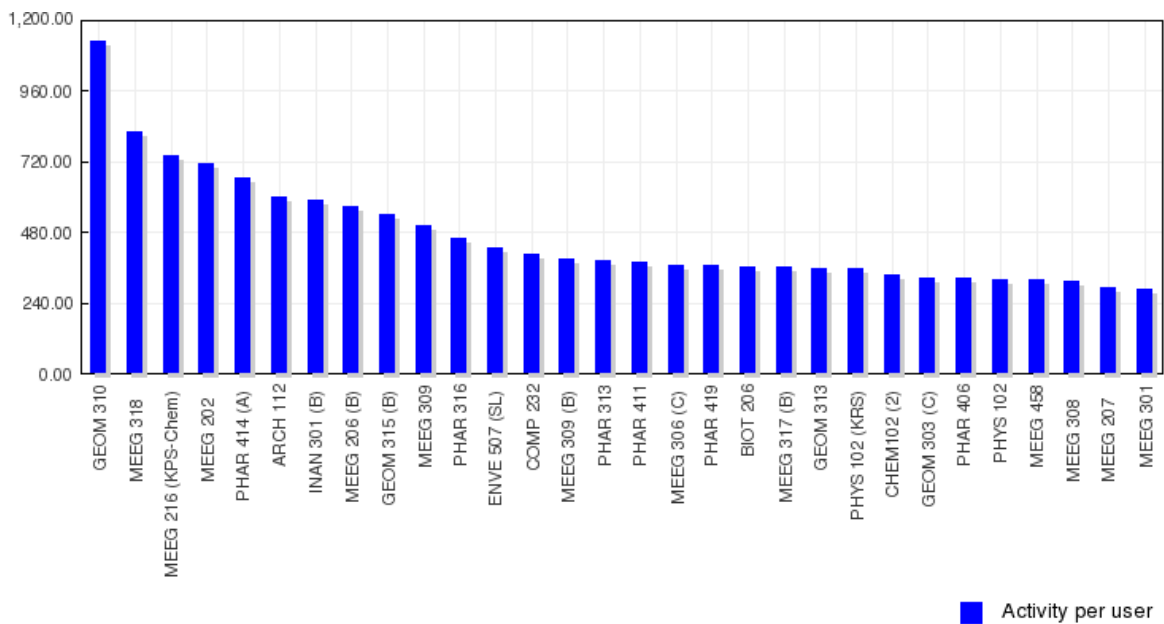
MOST ACTIVE COURSES (LAST 3 MONTHS)

- Top 30 Courses
- Based on activities inside a course from last 3 months
- ELF represents activities outside all courses



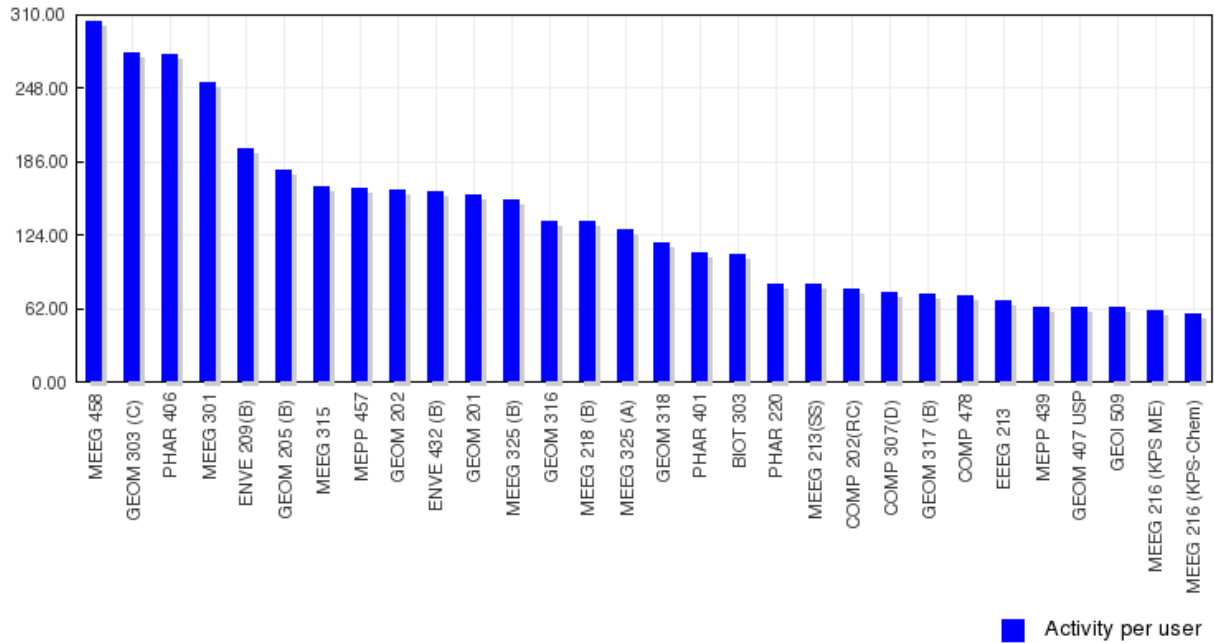
MOST ACTIVE COURSES WEIGHTED (LAST 1 YEAR)

- Top 30 Courses
- Based on activities inside a course from last 1 year
- Activities weighted per user (Total Activities ÷ Total Users)
- ELF represents activities outside all courses



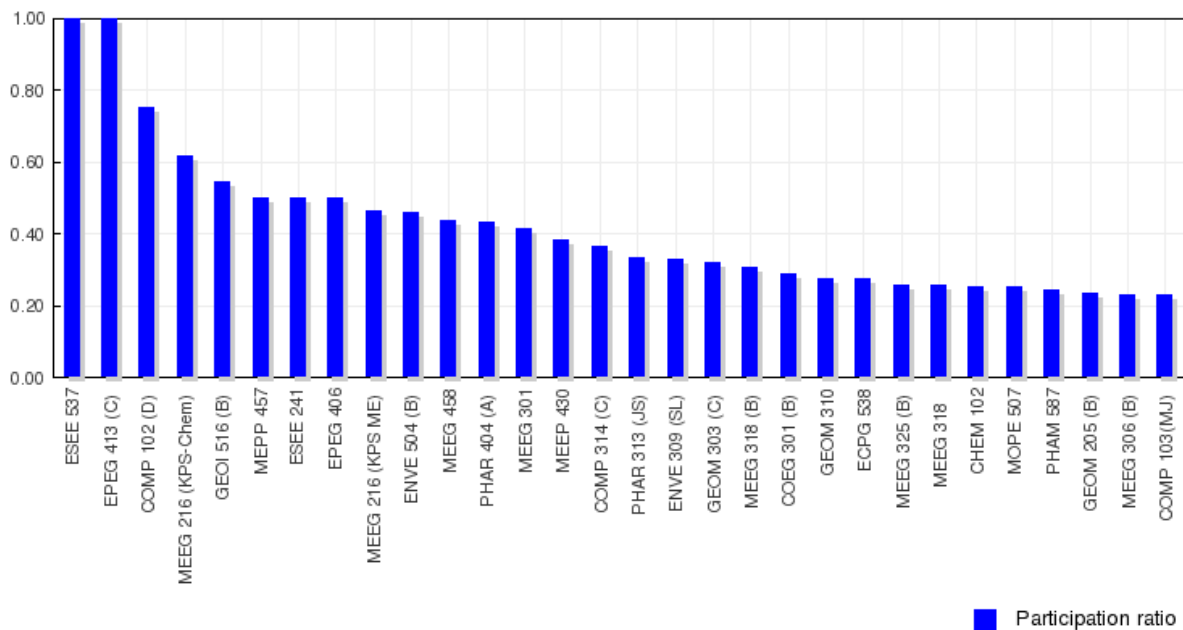
MOST ACTIVE COURSES WEIGHTED (LAST 3 MONTHS)

- Top 30 Courses
- Based on activities inside a course from last 3 months
- Activities weighted per user (Total Activities ÷ Total Users)
- ELF represents activities outside all courses



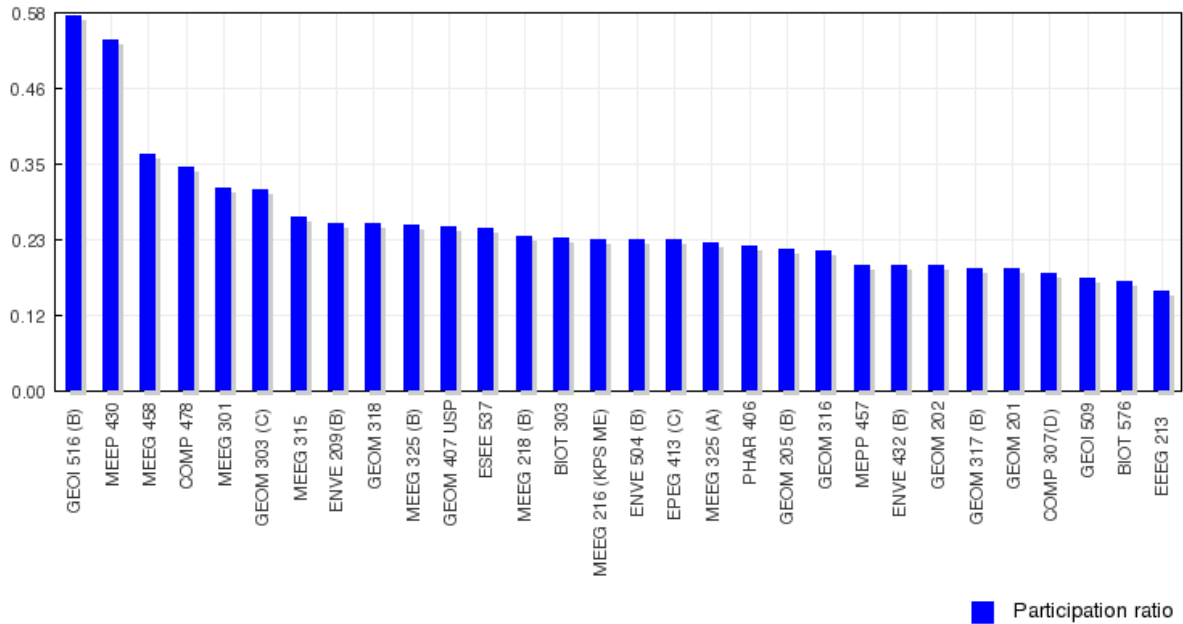
MOST PARTICIPATORY COURSE (LAST 1 YEAR)

- Top 30 Courses
- Based on activities inside a course from last 1 year
- Participation ratio based of total enrolled and total active users inside a course



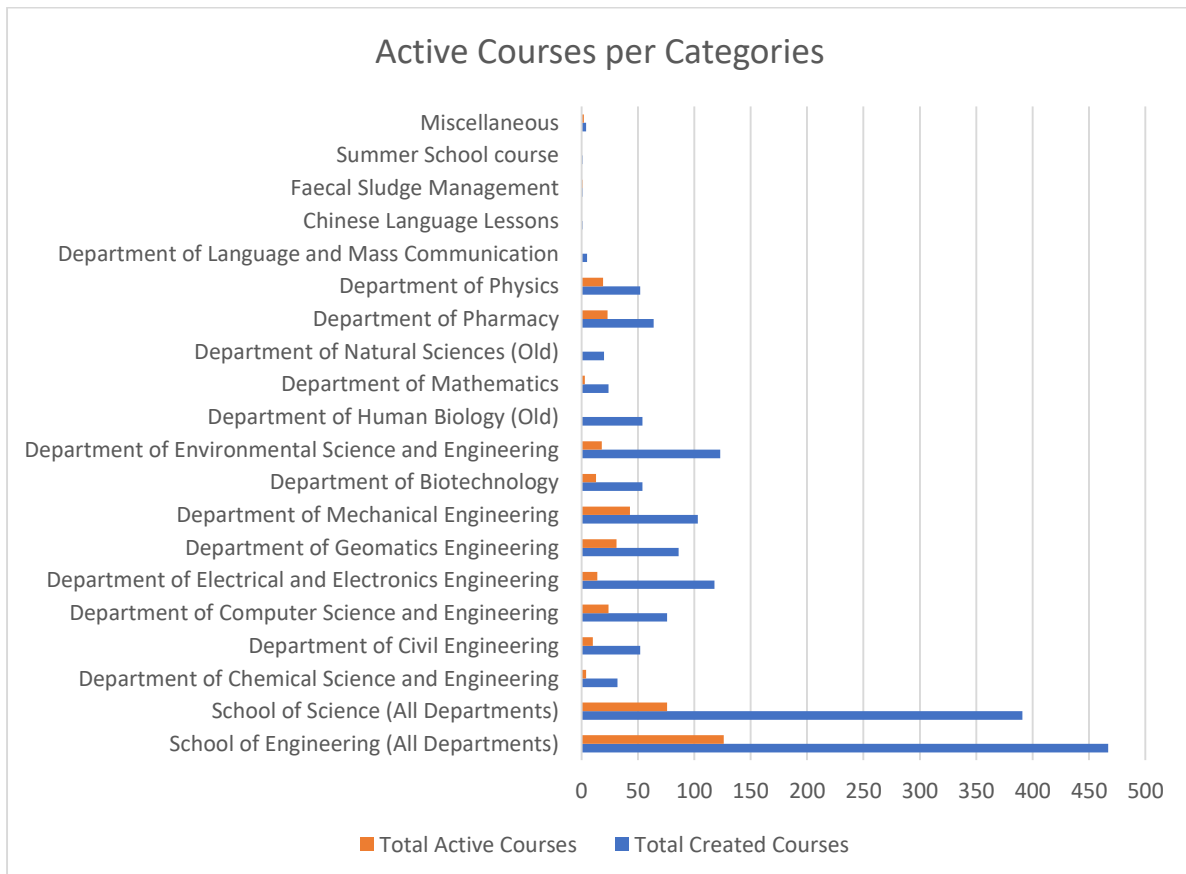
MOST PARTICIPATORY COURSE (LAST 3 MONTHS)

- Top 30 Courses
- Based on activities inside a course from last 3 months
- Participation ratio based of total enrolled and total active users



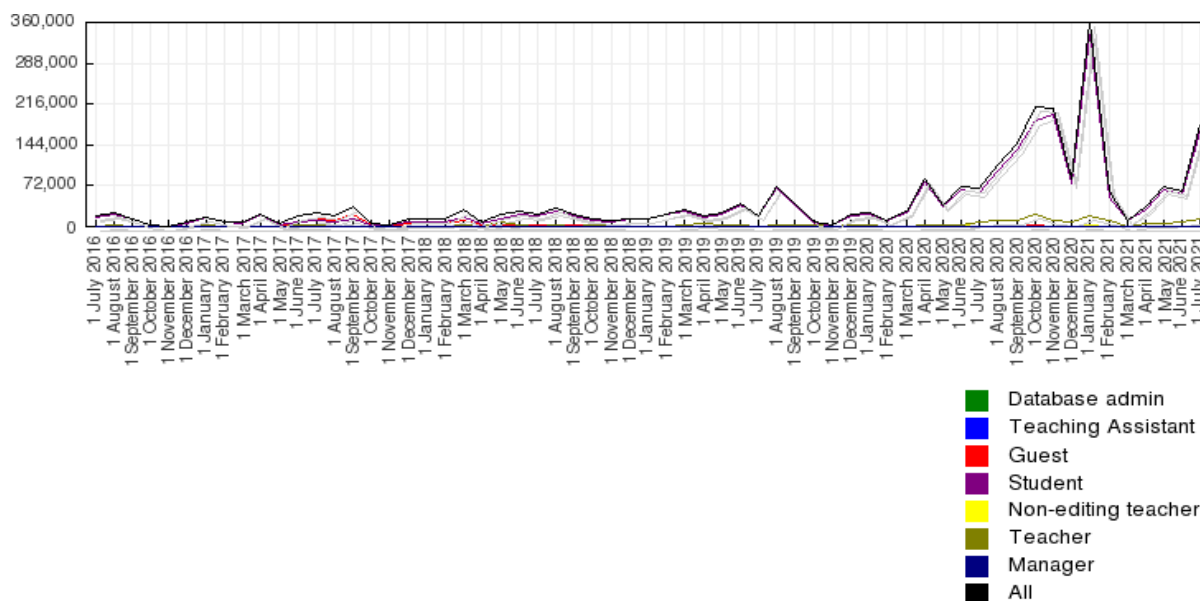
MOST ACTIVE CATEGORY (SCHOOL/UNIT/DEPARTMENT)

- Based on total courses inside a category and total used/active courses

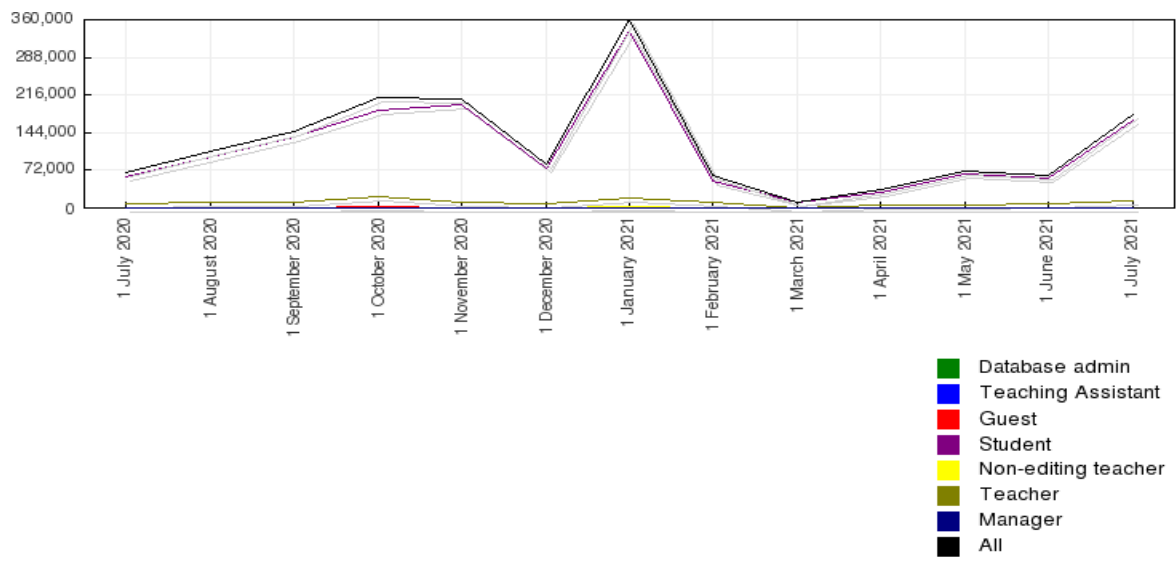


Category Name	Total Created Courses	Total Active Courses
School of Engineering (All Departments)	467	126
School of Science (All Departments)	391	76
Department of Chemical Science and Engineering	32	4
Department of Civil Engineering	52	10
Department of Computer Science and Engineering	76	24
Department of Electrical and Electronics Engineering	118	14
Department of Geomatics Engineering	86	31
Department of Mechanical Engineering	103	43
Department of Biotechnology	54	13
Department of Environmental Science and Engineering	123	18
Department of Human Biology (Old)	54	0
Department of Mathematics	24	3
Department of Natural Sciences (Old)	20	0
Department of Pharmacy	64	23
Department of Physics	52	19
Department of Language and Mass Communication	5	0
Chinese Language Lessons	1	0
Faecal Sludge Management	1	1
Summer School course	1	0
Miscellaneous	4	2

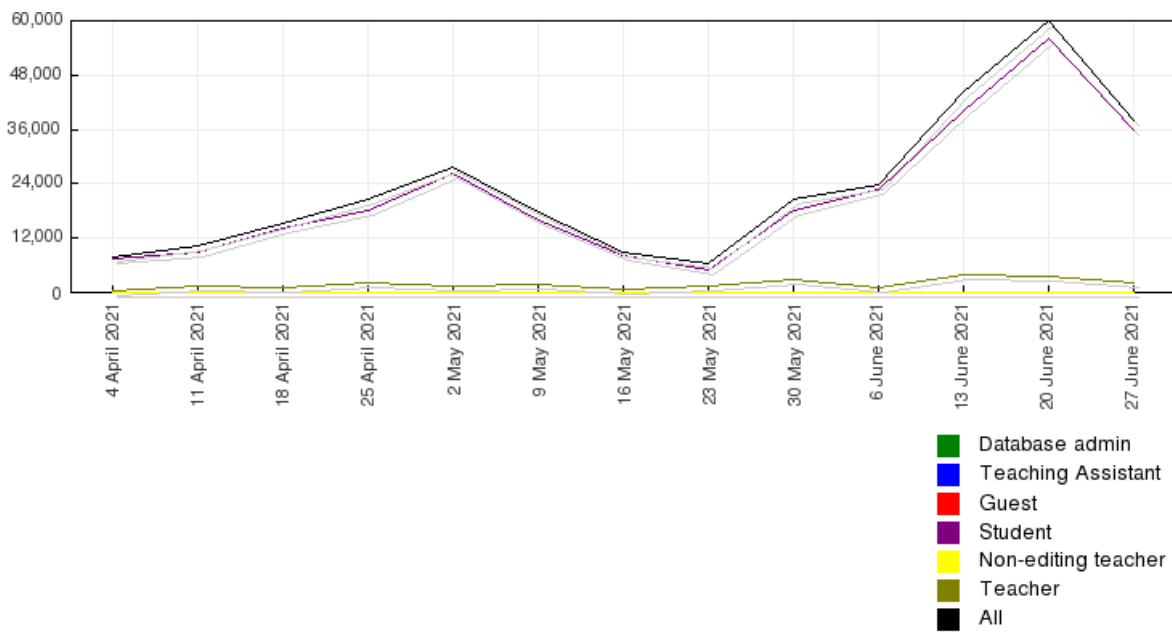
OVERALL SITE ACTIVITY/USAGE (LAST 5 YEARS)



OVERALL SITE ACTIVITY/USAGE (LAST 1 YEAR)



OVERALL SITE ACTIVITY/USAGE (LAST 3 MONTHS)



CONCLUSION

The KU ELF/Moodle Learning Management System is currently being used by faculties and students of School of Science and School of Engineering. For the purpose of this report the departments namely; Chemical Science and Engineering, Civil Engineering, Computer Science & Engineering, Electrical & Electronics Engineering, Geomatics Engineering, and Mechanical Engineering and their courses have been categorized under School of Engineering. Similarly, the departments namely; Biotechnology, Environment Science & Engineering, Mathematics, Pharmacy, and Physics and their courses have been categorized under School of Science.

Compared to the previous performance report prepared on 02.04.2021, a 2.5% rise in number of active online courses (based on activities inside each course) can be seen. For School of Engineering, current active course is 126. For School of Science, current active course is 76. The number of active courses for SoE has increased by 2% and SoS by 1.5% compared to previous analysis. About 625 new users were enrolled and approximately 18 new courses were created while keeping many of the older courses active. Based on the accumulative activities inside a course from the moment course was created since the beginning of time, the top 12 most active courses are still same as previous report. No any new thesis/project reports and end semester question sets have been added since last update.

----- END -----