

**Kathmandu University**  
**E-Learning Forum [<https://elf.ku.edu.np>]**  
**Moodle LMS Used by School of Science and School of Engineering**  
**Performance Report [09.07.2022]**

Last Report Date: 02.07.2021 (1 Year)

Prepared by: ISMS

**SYSTEM DETAILS**

S. No.	Particulars	Details
1	Active Since	2011
2	Moodle Version	4.0.1 (Upgraded from 3.1 on June 2022)
3	Operating System	Ubuntu 22.04
4	Server Processor	Intel Xeon Silver 4216 @2.10 GHz
5	Server Memory/Storage	64 GB / 4.4 TB (19% Used)

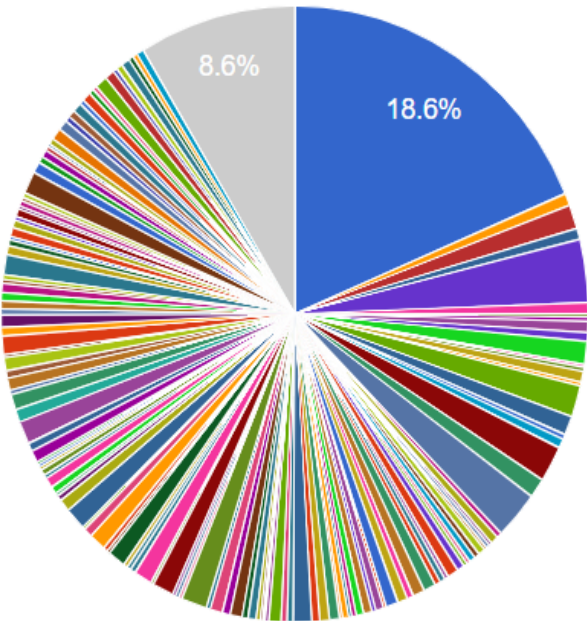
**SYSTEM STATISTICS**

S. No.	Particulars	Amount
1	Total Number of Users	7058
2	Total Admin Users	7
3	Total Course Admin Users	219
4	Total Course Student Users	5382
5	Total New Users (Since Last Report)	708
6	Total Active Users (Last 1 Year)	2962
7	Total Active Users (Last 6 Months)	2444
8	Total Active Course Admin Users (Last 1 Year)	100
9	Total Active Course Admin Users (Last 6 Months)	73
10	Total Courses ( <i>includes archived/obsolete as well</i> )	914
11	Total Active Courses	274
12	Total New Courses	44
13	Total End Sem Question Sets	1558
14	Total End Sem Question Bundles (all sets per sem)	68
15	Total Thesis and Project Reports	114

**MOST ACTIVE COURSES (TILL NOW)**

- Based on activities inside a course from the **beginning of time**
- ELF represents activities outside all courses

**Courses activity (Events by course)**

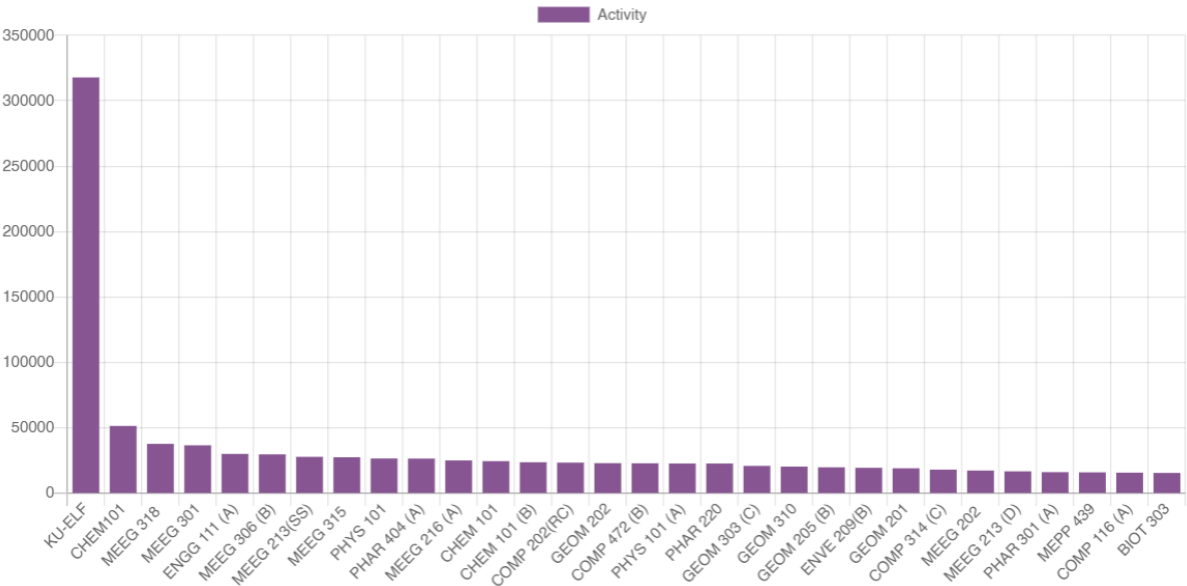


**Top 12**

- KU-ELF
- COMP 472 (C)
- COMP 341
- COMP 314
- COMP 232
- COMP 116
- EPEG 318
- EEEG 313
- EEEG 215
- EEEG 213
- CHEM101
- MATH 103

**MOST ACTIVE COURSES (LAST 1 YEAR)**

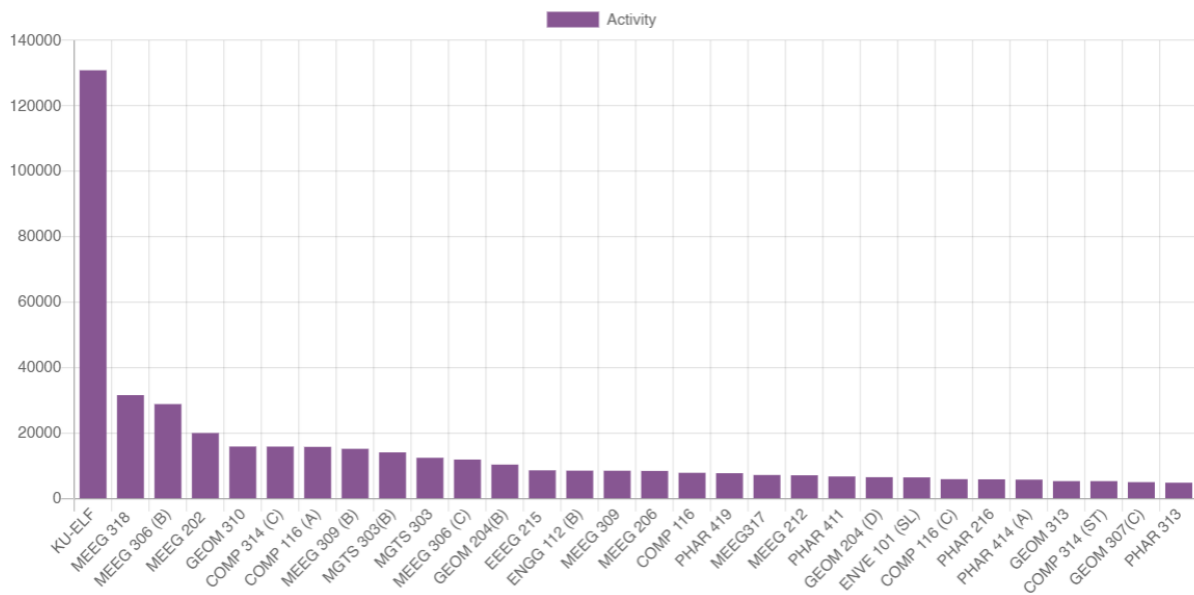
- Top 30 Courses
- Based on activities inside a course from last 1 year
- KU-ELF represents activities outside all courses



**MOST ACTIVE COURSES (LAST 6 MONTHS)**

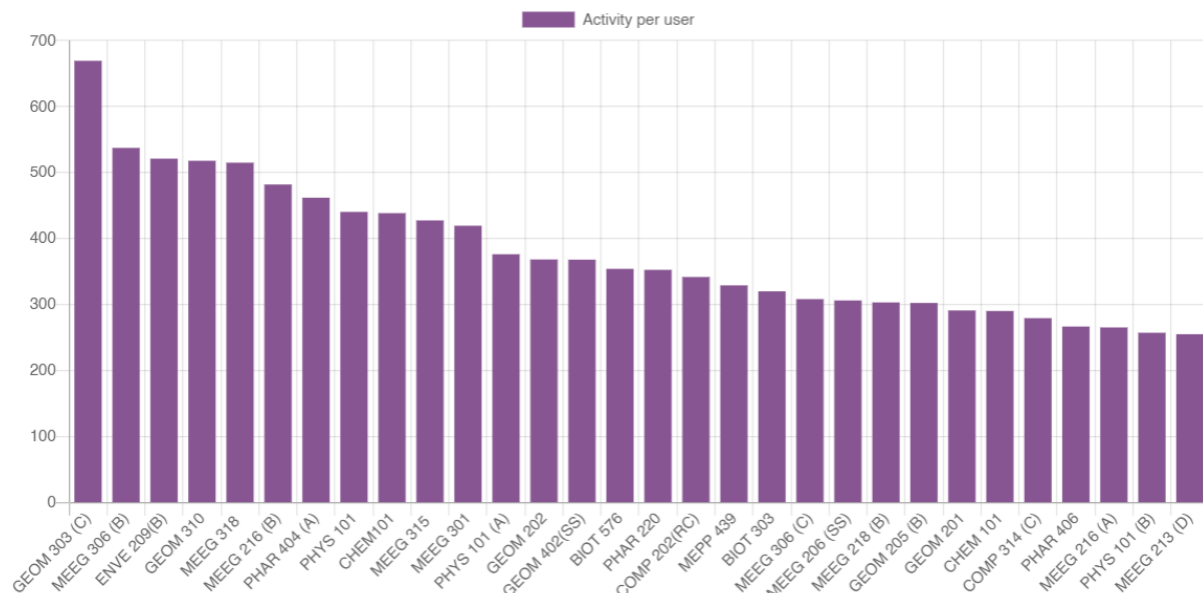
- Top 30 Courses
- Based on activities inside a course from last 6 months

- KU-ELF represents activities outside all courses



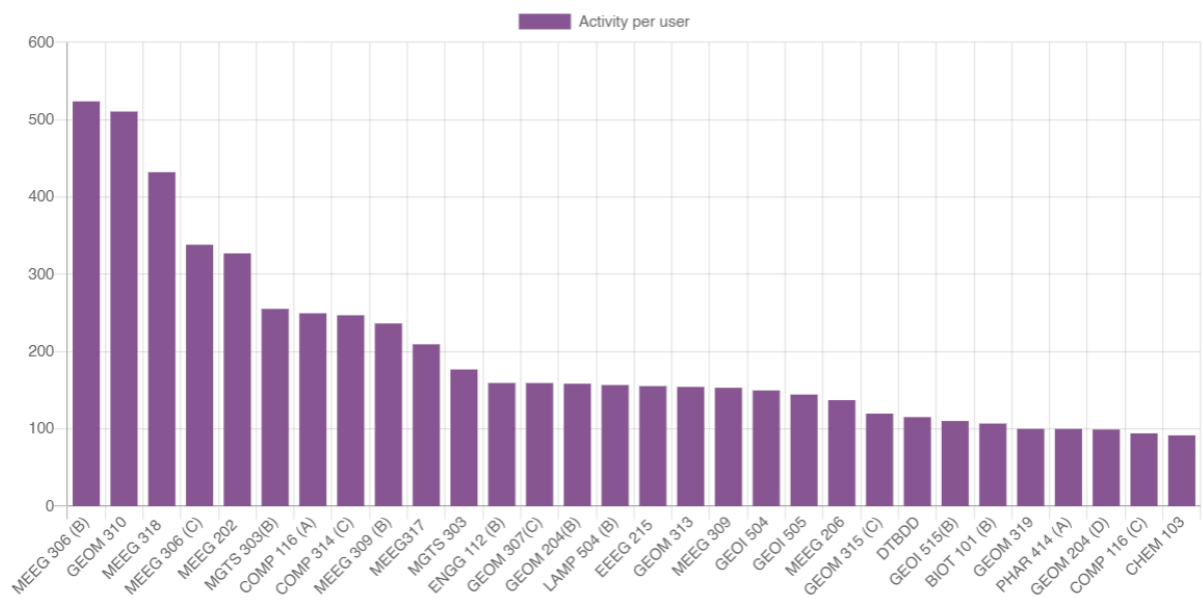
### MOST ACTIVE COURSES WEIGHTED (LAST 1 YEAR)

- Top 30 Courses
- Based on activities inside a course from last 1 year
- Activities weighted per user (Total Activities ÷ Total Users)
- ELF represents activities outside all courses



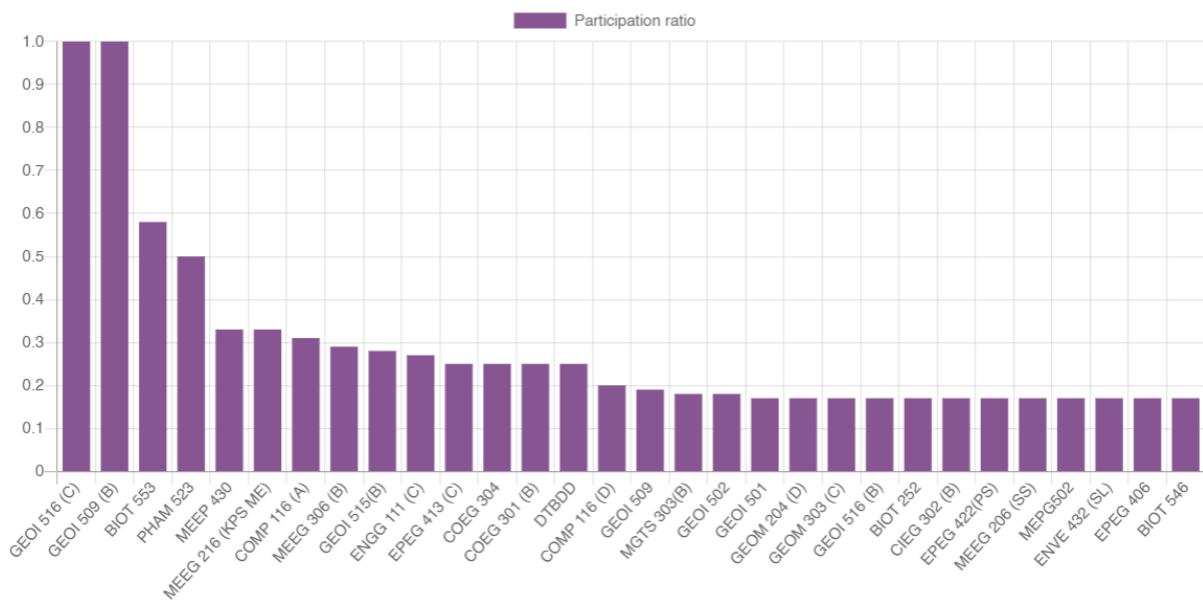
### MOST ACTIVE COURSES WEIGHTED (LAST 6 MONTHS)

- Top 30 Courses
- Based on activities inside a course from last 6 months
- Activities weighted per user (Total Activities ÷ Total Users)
- KU-ELF represents activities outside all courses



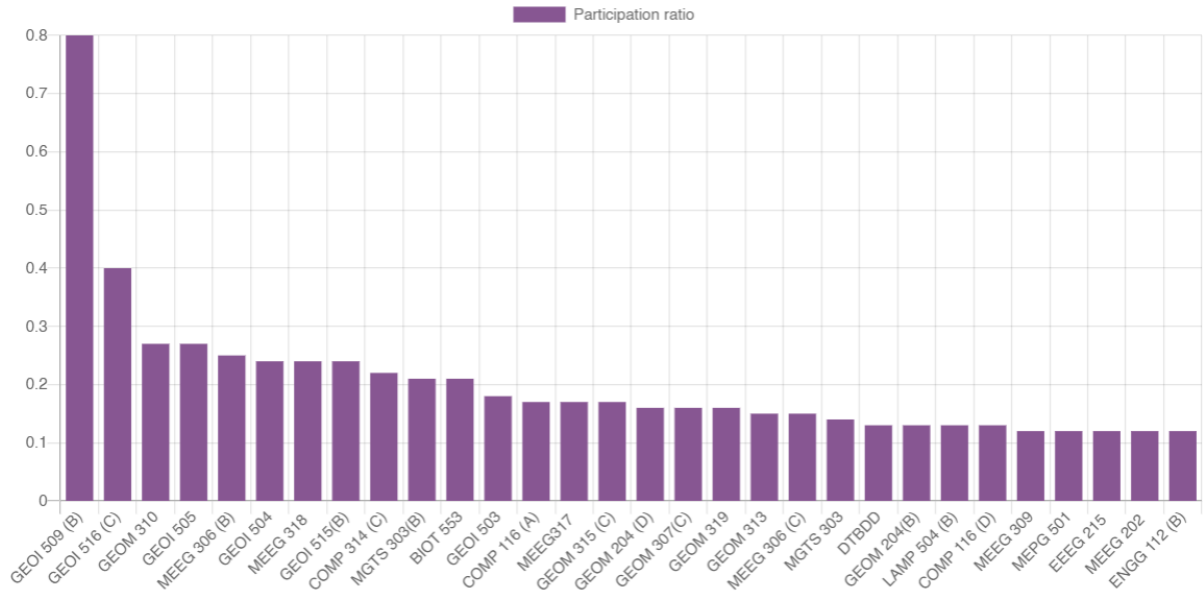
**MOST PARTICIPATORY COURSE (LAST 1 YEAR)**

- Top 30 Courses
- Based on activities inside a course from last 1 year
- Participation ratio based of total enrolled and total active users inside a course



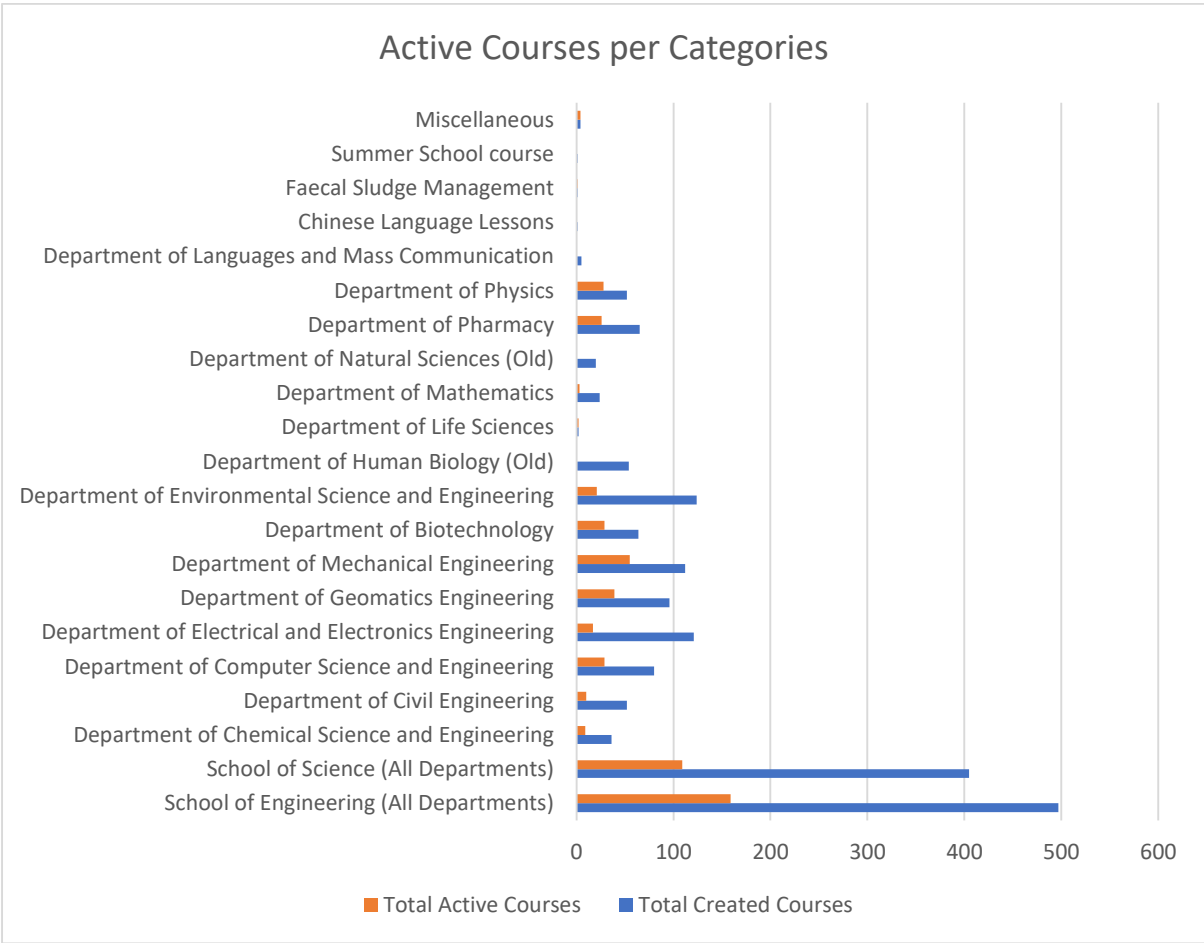
**MOST PARTICIPATORY COURSE (LAST 6 MONTHS)**

- Top 30 Courses
- Based on activities inside a course from last 6 months
- Participation ratio based of total enrolled and total active users



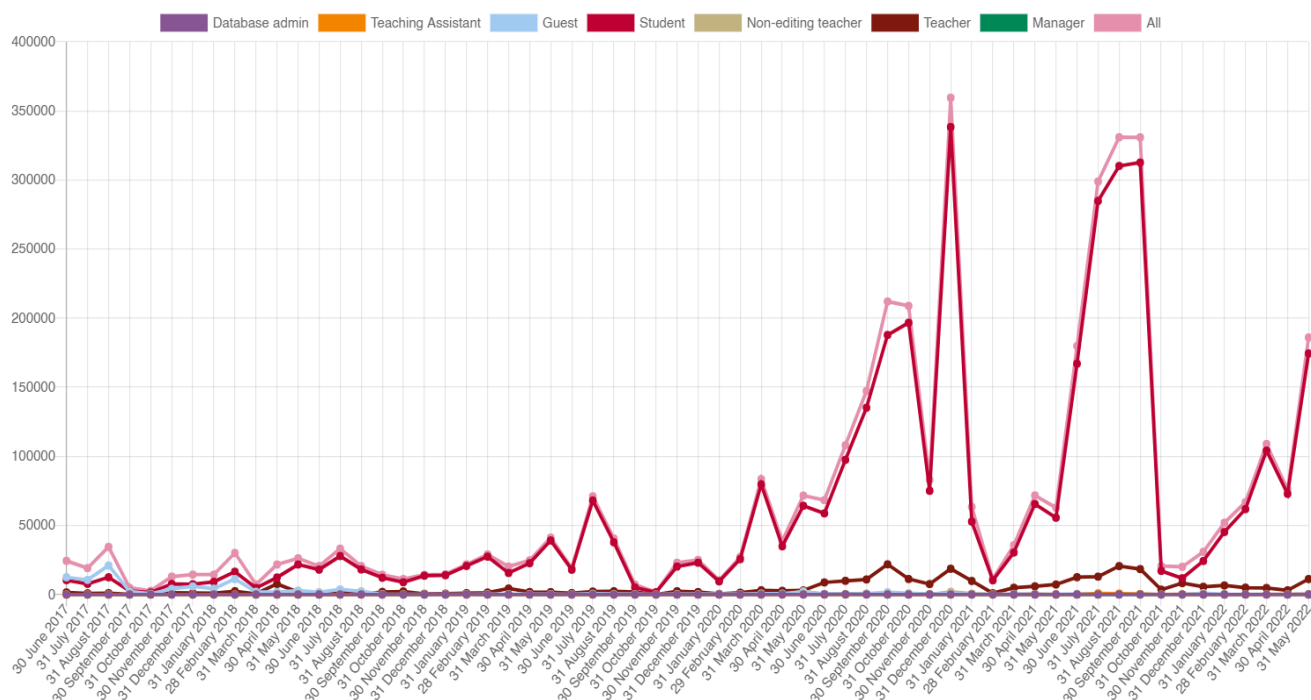
**MOST ACTIVE CATEGORY (SCHOOL/UNIT/DEPARTMENT)**

- Based on total courses inside a category and total used/active courses

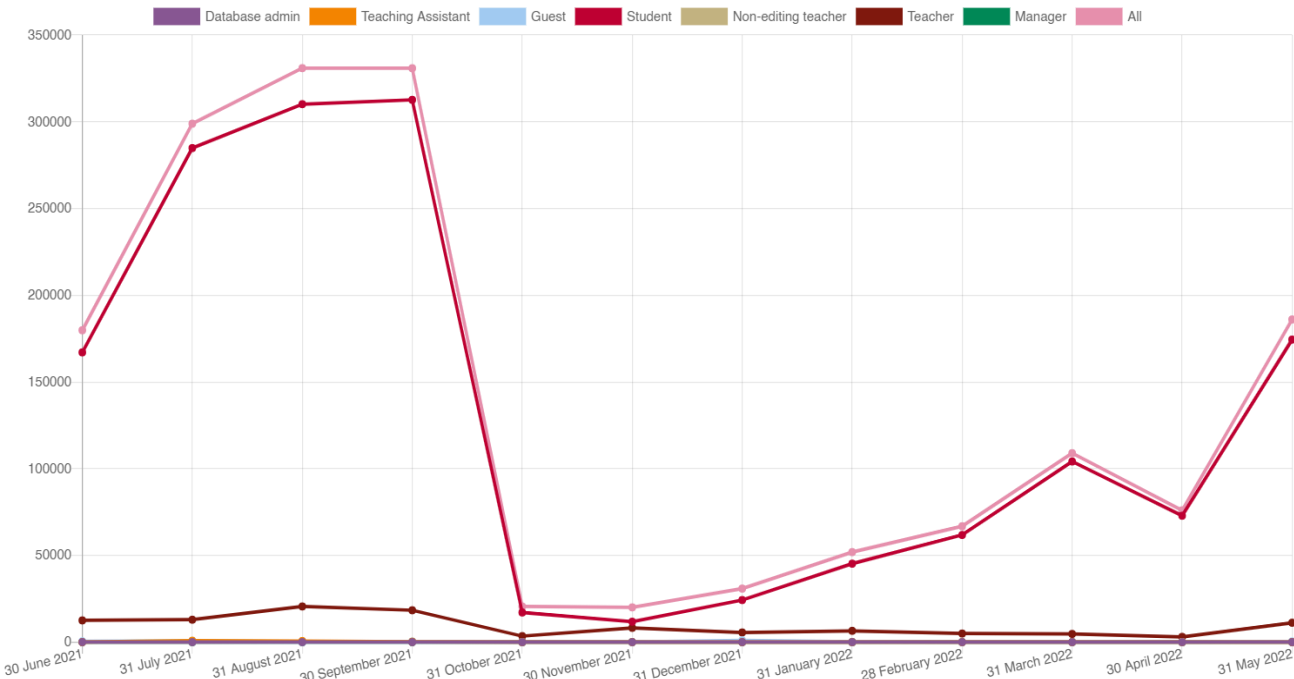


Category Name	Total Created Courses	Total Active Courses
School of Engineering (All Departments)	497	159
School of Science (All Departments)	405	109
Department of Chemical Science and Engineering	36	9
Department of Civil Engineering	52	10
Department of Computer Science and Engineering	80	29
Department of Electrical and Electronics Engineering	121	17
Department of Geomatics Engineering	96	39
Department of Mechanical Engineering	112	55
Department of Biotechnology	64	29
Department of Environmental Science and Engineering	124	21
Department of Human Biology (Old)	54	0
Department of Life Sciences	2	2
Department of Mathematics	24	3
Department of Natural Sciences (Old)	20	0
Department of Pharmacy	65	26
Department of Physics	52	28
Department of Languages and Mass Communication	5	0
Chinese Language Lessons	1	0
Faecal Sludge Management	1	1
Summer School course	1	0
Miscellaneous	4	4
<b>Total</b>	<b>914</b>	<b>274</b>

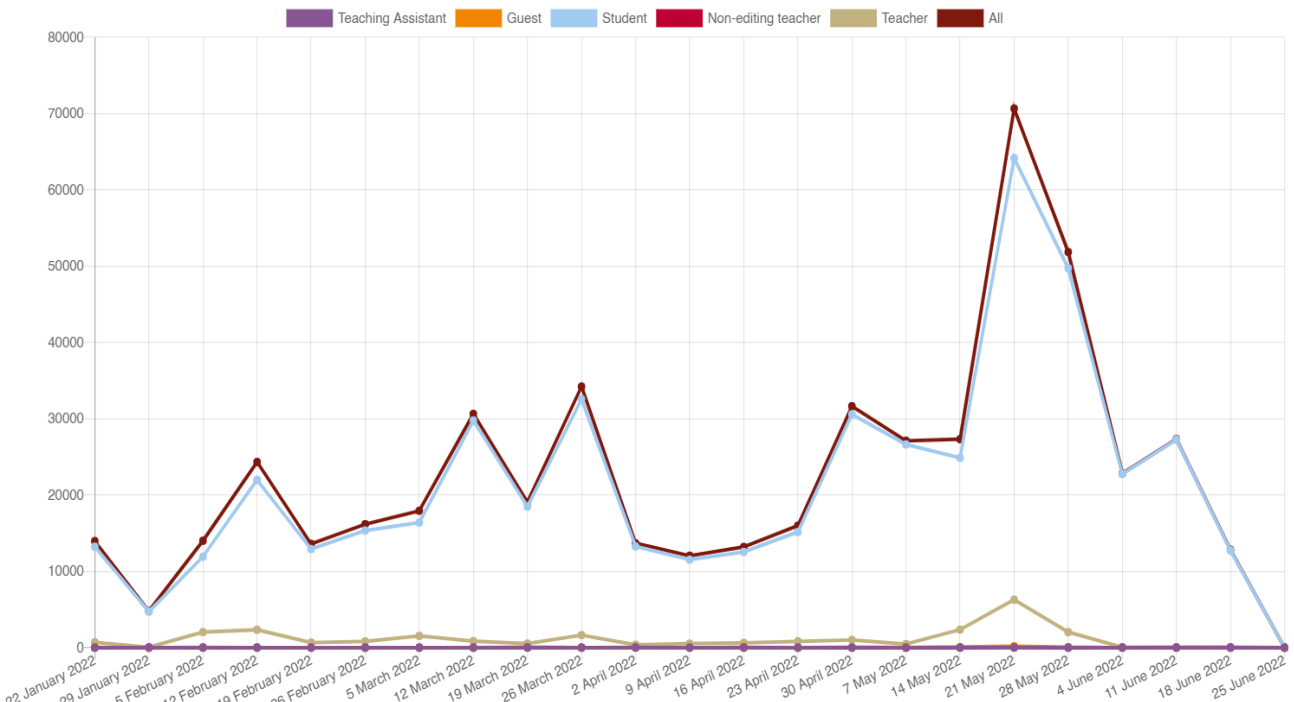
### OVERALL SITE ACTIVITY/USAGE (LAST 5 YEARS)



OVERALL SITE ACTIVITY/USAGE (LAST 1 YEAR)



OVERALL SITE ACTIVITY/USAGE (LAST 6 MONTHS)



## CONCLUSION

The KU ELF/Moodle Learning Management System is currently being used by faculties and students of School of Science and School of Engineering. For the purpose of this report the departments namely; Chemical Science and Engineering, Civil Engineering, Computer Science & Engineering, Electrical & Electronics Engineering, Geomatics Engineering, and Mechanical Engineering and their courses have been categorized under School of Engineering. Similarly, the departments namely; Biotechnology, Environment Science & Engineering, Mathematics, Pharmacy, Physics, and Life Sciences and their courses have been categorized under School of Science.

Compared to the previous performance report prepared on **02.07.2021**, a **6.4% rise** in number of active online courses (based on activities inside each course) can be seen. For **School of Engineering, current active course is 159**. For **School of Science, current active course is 109**. The number of active courses for **SoE has increased by 2.91% and SoS by 3.19%** compared to previous analysis. About **708 new users** were enrolled and approximately **44 new courses** were created while keeping many of the older courses active. Based on the accumulative activities inside a course from the moment course was created since the beginning of time, the top most active courses are still fairly similar as previous report. No any new thesis/project reports have been added but **68 new question bundles** (each bundle comprising of end semester questions sets of all the subjects taken in a particular year/semester) were updated since last report.

----- END -----